

DuctTech

SILENTFLOW RIGHT FOR RESIDENTIAL



CONTENTS

PAGE

INTRODUCTION 3

HOW TO SELECT THE RIGHT FANS 4



CEILING MOUNTED VENTILATION
DUCT FANS 6



INLINE MIXED FLOW FANS 11



HIGH PRESSURE INLINE MIXED FLOW
FANS 400 - 500 ESP 12



SILENT FANS 14



AXIAL IN LINE FANS 16



IN-LINE FANS WITH
NON-RETURN AIR DAMPER 17



SQUARE CENTRIFUGAL IN-LINE FANS 18



ROUND CENTRIFUGAL FANS 19



CENTRIFUGAL DUCT FANS - PLASTIC 20



CENTRIFUGAL DUCT FANS - METAL 21



FAN ACCESSORIES 22

INTRODUCTION

DuctTech is an Australian owned and operated company. We have been providing the air conditioning industry with quality equipment for more than 10 years. Our range of fans are designed and engineered to provide quiet and efficient operation for bathroom, laundry and kitchen ventilation requirements.

DuctTech Silentflow fans are fully compliant with all Australian and New Zealand standards and regulations. Products are designed to perform and deliver high performance and efficient air movement and ventilation, with easy installation to save time and money.

DuctTech Silentflow fans are designed to connect to DuctTech Low Profile Spacesaver Ductwork and along with our grilles and backdraft dampers provide a quiet, efficient low cost solution for all your bathroom and kitchen ventilation requirements.

ADVANTAGES OF DUCTTECH FANS

- Ease of installation
- Low operating noise
- Available with run on timers (upon request)
- Available in multiple sizes to suit a large range of applications
- Easy removal of fan motor assembly
- High airflow to perform at high static pressure
- Adjustable motor speed
- All units suitable for hot and cold air transfer systems

OPTIONAL FEATURES

- Most SilentFlow Fans can be fitted with EC motors
- Most SilentFlow Fans can be fitted with speed controllers

CUSTOM BUILT FANS

DuctTech can manufacture fans made to special specifications.

- Axial Fans
- In Line Fans
- Centrifugal Fans
- Mixed Flow Fans
- Domestic Ceiling Box Fans
- Silent Built In Attenuator Fans

WARRANTY

All products come with one year warranty.

HOW TO SELECT THE RIGHT FANS

EFFICIENT VENTILATION

Ventilation is not always applied properly and this can mean that while two rooms may have the same rate of air flow, one may be better ventilated than the other and thus have better quality air.

The efficiency of ventilation is defined by the capacity of a ventilation system to remove pollutants from a confined environment. A highly efficient system can therefore provide excellent air quality with a lower rate of airflow than a less efficient system. The efficiency of ventilation depends on certain factors such as:

- The characteristics of the system
- The characteristics and position of the air outlets
- The type of room

VENTILATION SYSTEMS CAN BE SPLIT INTO TWO CATEGORIES:

1. Domestic ventilation systems
2. Industrial ventilation systems

The key factor however is always the flow rate, i.e. the amount of air to be extracted from or introduced to a room over a given period of time. This rate is usually expressed in L/s.

THE CHOICE OF VENTILATOR SHOULD BE BASED ON:

- The type of room: domestic, commercial, and industrial
- The volume of the room
- The type of airflow to be ducted and its characteristics
 - Fresh air
 - Air + duct
 - Ducting special airflows
- Type of possible ventilation system configuration
 - Wall-mounted system with ducted extraction
 - Wall-mounted system with direct extraction to exterior
 - Window mounted extractor
 - Specific extractors for long ducting
 - Systems for centralized units
- Positioning of air inlets and outlets
- Special conditions: temperature, humidity
- Required airflow and pressure
- Noise level
- Type of power supply: single or three-phase

APPLICATION EXAMPLES



APARTMENT



BATHROOM



KITCHEN



LAUNDRY



HOTEL



BOARD ROOM

SQUARE CEILING MOUNTED VENTILATION DUCT FAN 100mm AND 150mm

FEATURES

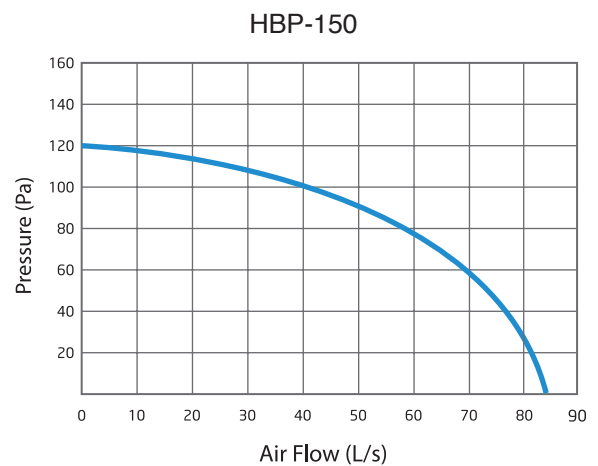
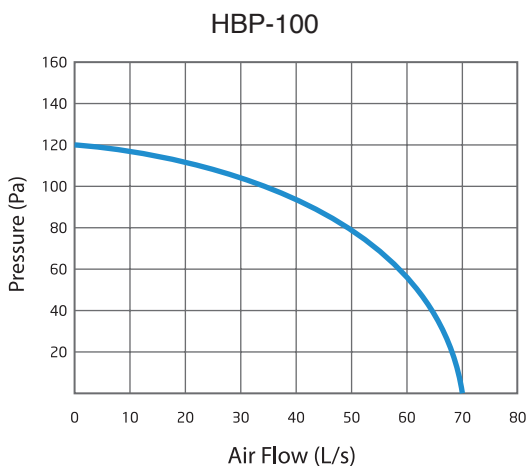
- High-static duct characteristics
- Built-in non-return damper
- High performance centrifugal impeller
- Large air volume, super quiet
- High-efficiency
- Incorporates a clip fixing system for fast and easy installation
- Run-on timer version (optional)



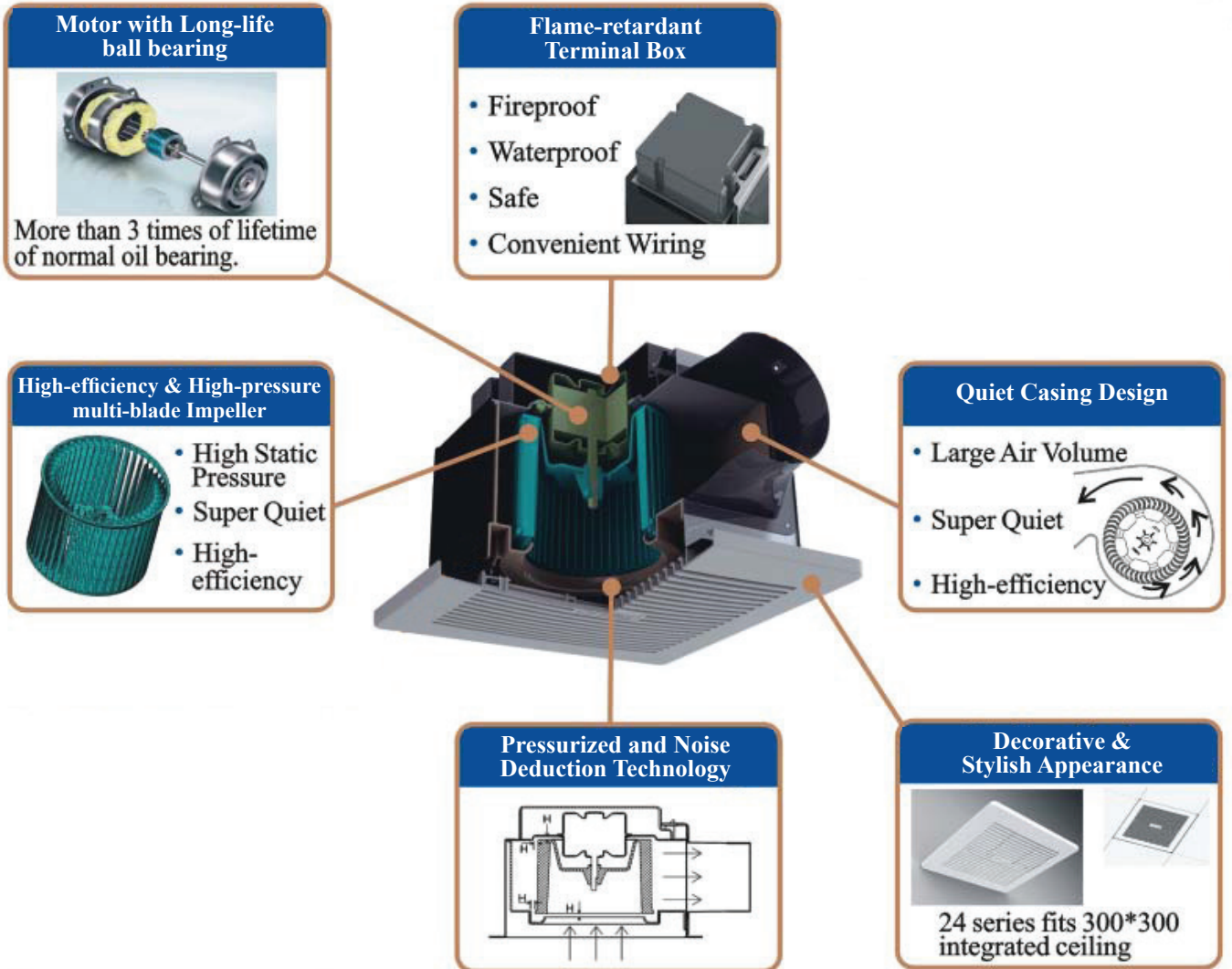
PERFORMANCE TABLE

Product Code	Voltage	Frequency (Hz)	Power (W)	Speed (RPM)	Airflow (L/s)	Pressure (Pa)	Noise (A) @3m	Duct Size (mm)	Hole Cutting Size (mm)	Weight (Kg)
HBP-100	240	50	30	1050	71	120	35	100	240x240	1.9
HBP-150	240	50	35	1050	85	120	33	150	270x270	3.5

PERFORMANCE CURVES



FEATURES



SQUARE CEILING MOUNTED VENTILATION DUCT FAN 150mm

FEATURES

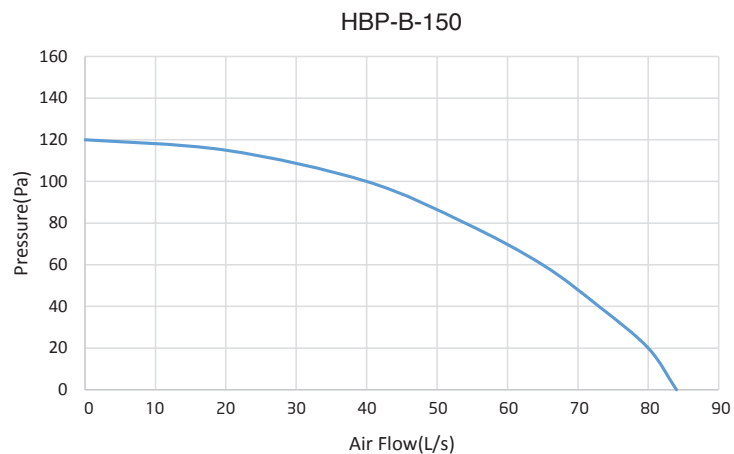
- High-static duct characteristics
- Built-in non-return damper
- High performance centrifugal impeller
- Large air volume, super quiet
- High-efficiency
- Incorporates a clip fixing system for fast and easy installation
- Run-on timer version (optional)



PERFORMANCE TABLE

Product Code	Voltage	Frequency (Hz)	Power (W)	Speed (RPM)	Airflow (L/s)	Pressure (Pa)	Noise (A) @3m
HBP-B-150	240	50	35	1050	86	122	38

PERFORMANCE CURVES



ROUND CEILING MOUNTED VENTILATION DUCT FAN 150mm

FEATURES

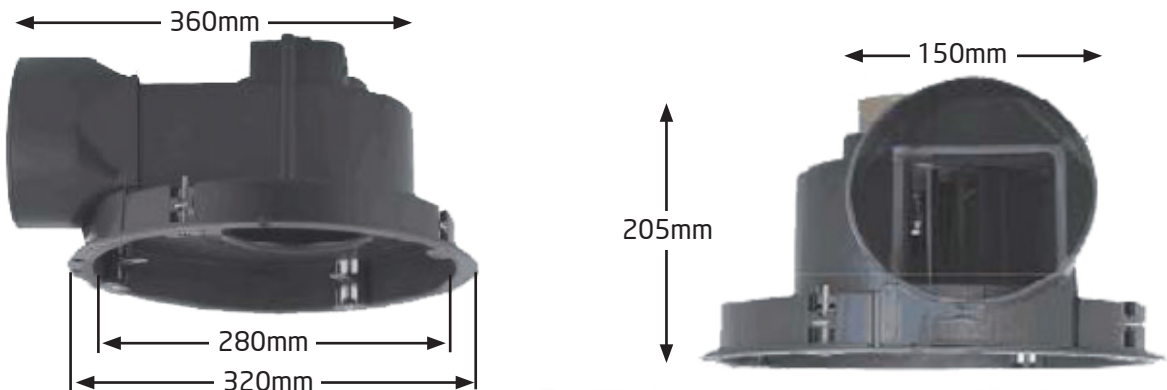
- High-static duct characteristics
- Built-in non-return damper
- High performance centrifugal impeller
- Large air volume, super quiet
- High-efficiency
- Incorporates a clip fixing system for fast and easy installation
- Run-on timer version (optional)



PERFORMANCE TABLE

Product Code	Voltage	Frequency (Hz)	Power (W)	Speed (RPM)	Airflow (L/s)	Pressure (Pa)	Noise (A)@3m	Duct Size (mm)
HBR-150	240	50	35	1050	89	135	38	150
Air Density (Kg/ m ³)	Temperature (°C)	Humidity (%)	Fan Diameter (mm)		Impeller Type		Weight (Kg)	
1.2	20	38	2750		0.27		2.2	

DIMENSIONS (mm)



This series is a ceiling mounted exhaust fan suitable for tight ceiling spaces in domestic and residential high-rise applications.

MOTOR DATA

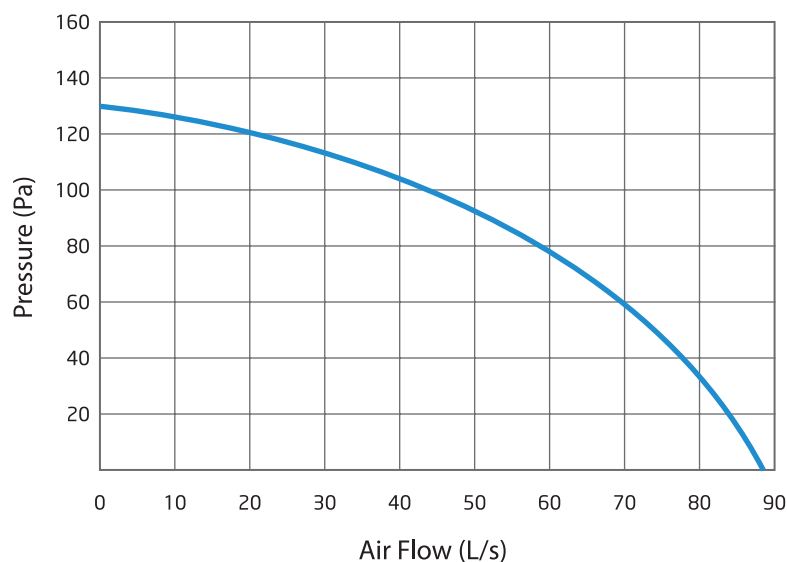
Motor Power (kW)	Motor Pole	Voltage (V)	Phase	Full Load Current (A)	Starting Current (A)	Class	Frame Size (mm)
0.035	2	240	1	0.25	0.75	Standard no Ancils	322

SOUND LEVELS

Spectrum (Hz)	63	125	250	500	1k	2k	4k	8k	Total SPL@3m dB(A)
LW Inlet/Outlet (dB)	45	50	48	55	54	52	49	41	38

The sound power level ratings are shown in decibels & referred to in 10^{-12} watts.

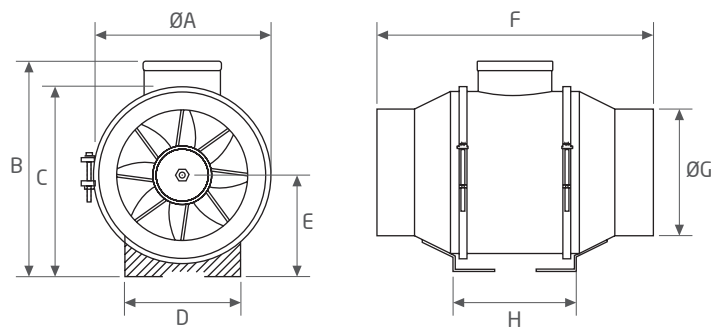
PERFORMANCE CURVES



INLINE MIXED FLOW FANS

FEATURES

- Inline duct type mixed flow, two speed design fan with removable motor
- Ideally suited for DuctTech SpaceSaver Low Profile Ducting (eg. exhaust kitchen, bathroom, laundry etc.)
- Made from injection moulded polymer body fitted with mixed flow impeller
- Easy removal and installation of motor and fan impeller
- Suitable for a range of applications up to 65 C°
- Light weight and compact in size for tight spaces
- Two speeds high and low, high static pressure
- Very quiet operating with low dB
- In-built run-on timer (optional)



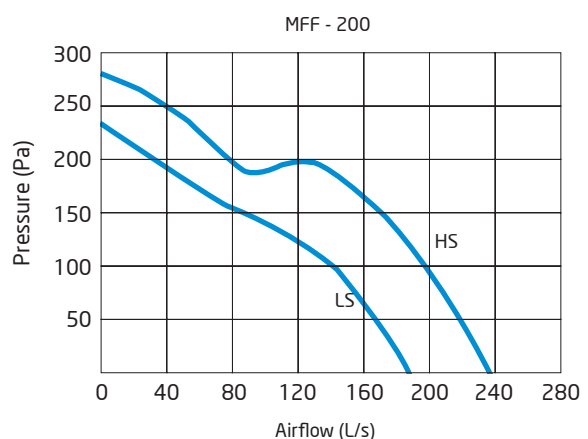
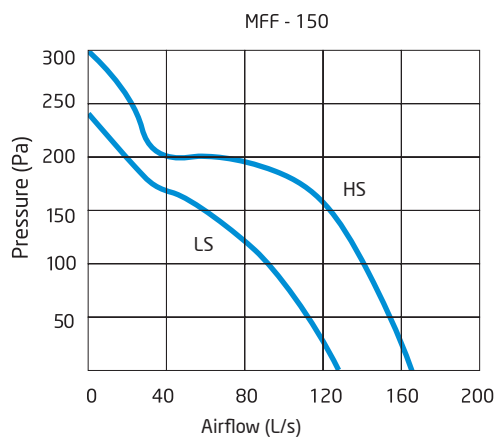
DIMENSIONS (mm)

Model	Ø A	B	C	D	E	F	Ø G	H	Weight (Kg)
MFF-150	147	242	213	130	114	319	146	142	2.7
MFF-200	197	247	212	94	124	302	198	120	4.9

PERFORMANCE TABLE

Model	Speed	Max. Flow (L/s)	Sound Level dB (A)	Fan Speed (RPM)	Power (W)	Amps at 240V	Max. Operating Temp (°C)	Suits Duct Diameter (mm)	Voltage
MFF-150	High	169	33	2500	50	0.22	60	150	230
	Low	130	29	1950	44	0.19	65		
MFF-200	High	237	47	2450	128	0.57	60	200	230
	Low	191	41	1950	123	0.52	60		

PERFORMANCE CURVES



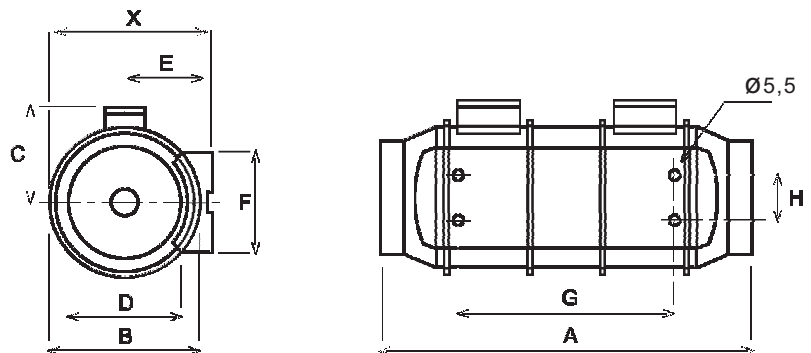
HIGH PRESSURE INLINE MIXED FLOW FANS 400 - 500 ESP

The HFx2 range consists of two HFx2 fans mounted in series to produce almost twice the pressure of a single fan. This fan is recommended when an increase in static pressure is required. HFx2 can also be obtained coupling 2 HF model fans using a flange MBR.



FEATURES

- Polypropylene plastic, moulded, with high acidic resistance
- ABS blades, design to reach optimal air and pressure
- Two speed motor, NMB ball bearing, 50,000 hours
- IP44 Protection class, water proof and dust proof
- Can be designed with a delay function, temperature sensors and humidity sensors
- Operating temperature range : -20°C ~ 60°C



DIMENSIONS (mm)

Model	X	A	B	C	D	E	F	G	H	Weight (Kg)
HFx2-150	212.5	520	200	127	147	111.5	130	249	60	5.0
HFx2-200	232.5	500	217	141	197	124	140	298	94	8.7

PERFORMANCE TABLE

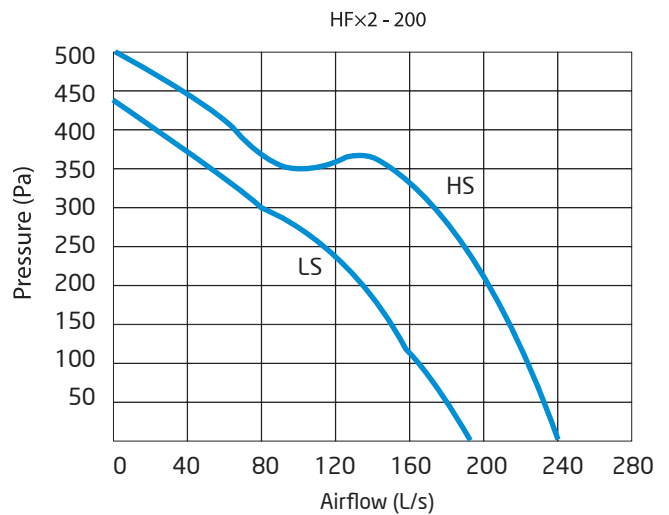
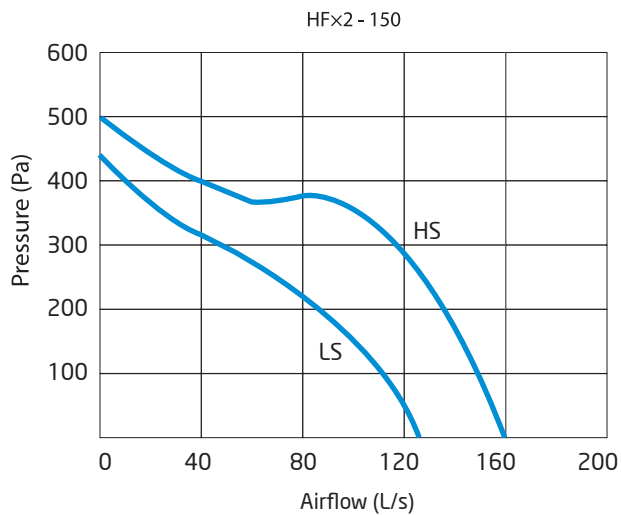
HFx2 FAN	Speed	Speed (RPM)	Power (W)	Amps at 240V	Airflow (L/s)	Air Pressure (Pa)	Operating Temp (°C)	Sound Pressure Level (dB(A))	Weight (Kg)
HFx2-150	High	2500	100	0.44	161	500	-20/+60	48	5.0
	Low	1950	88	0.38	132	446		41	
HFx2-200	High	2500	240	1.00	242	520	-20/+60	52	8.7
	Low	2000	200	0.90	198	448		48	

POWER SPECTRUM IN dB(A) PERFORMANCE TABLES

Air inlet	63	125	250	500	1000	2000	4000	8000
HFx2-150	38	41	61	63	65	68	62	54
HFx2-200	43	53	67	69	74	73	70	60

Air inlet	63	125	250	500	1000	2000	4000	8000
HFx2-150	31	38	49	45	50	59	48	35
HFx2-200	35	42	53	52	60	63	54	39

PERFORMANCE CURVES



SILENT FANS

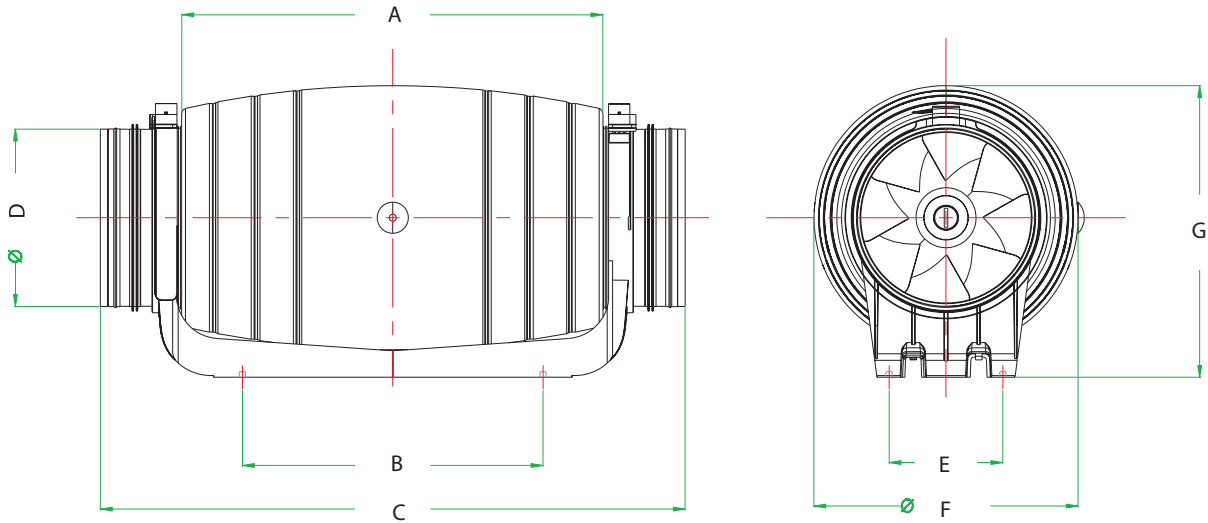


FEATURES

- Built-in attenuators
- Built-in Backdraft Damper
- Light weight and compact in size for tight spaces
- Two speeds high and low, high static pressure
- Very quiet operating low dB
- Easy removal and installation of motor and fan impeller
- Built-in run-on timer (optional)
- Inline duct type mixed flow, two speed design fan with removable motor
- Ideally suited for DuctTech SpaceSaver Low Profile Ducting (eg. exhaust kitchen, bathroom etc.)
- Made from injection moulded polymer body fitted with mixed flow impeller
- Suitable for a range of applications up to 65°C

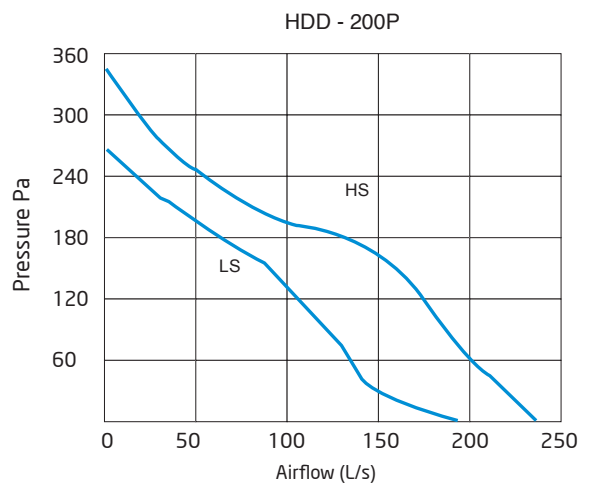
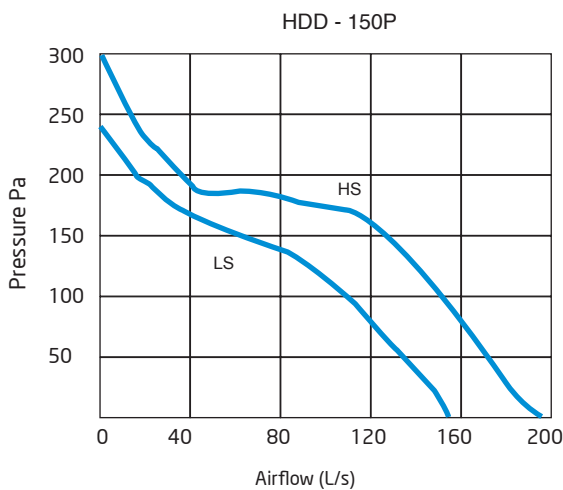
DIMENSIONS (mm)

Model	A	B	C	Ø D	E	Ø F	G
HDD - 150P	352	251	488	148	95	221	244
HDD - 200P	436	339	567	198	128	262	301



PERFORMANCE TABLE

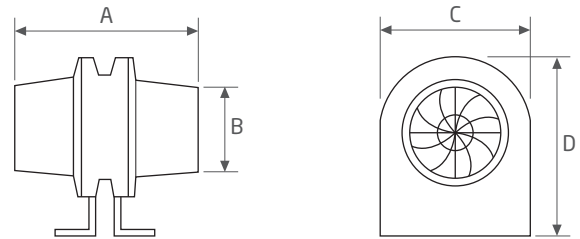
Model	Speed	Max. Flow (L/s)	Air Pressure (PA)	Sound Level dB (A)	Fan Speed (RPM)	Power (W)	Amps at 240V	Max. Operating Temp (°C)	Suits Duct Diameter (mm)	Voltage	Weight (Kg)
HDD - 150P	High	195	300	31	2500	50	0.25	60	150	240	4.0
	Low	153	240	26	1850	43	0.20	60			
HDD - 200P	High	238	352	35	2450	140	0.60	60	200	240	4.9
	Low	191.7	274	29	1850	135	0.58	60			



AXIAL IN-LINE FANS

FEATURES

- High efficiency 'whisper quiet' in-line fan
- Designed to provide higher levels of extraction
- Low relative noise
- Ball bearing motor prolongs the life of the motor
- Single Speed



DIMENSIONS (mm)

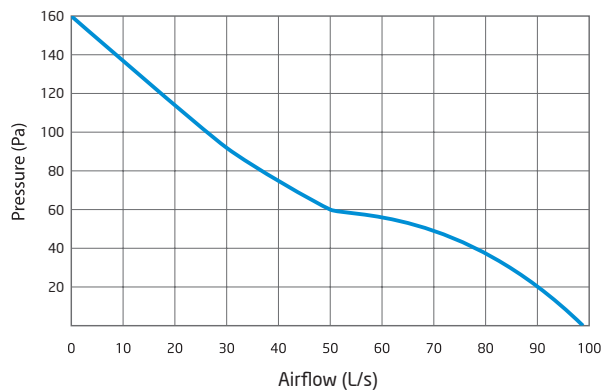
Size	A	B	C	D
ILF150	200	143	170	185

PERFORMANCE TABLE

Model	Performance (L/s)	Power (W)	Sound Level dB(A)	Fan Speed RPM	Amps at 240V
ILF150	97	46	38	2750	0.27

Note: All fan flow rates quoted are free air delivery.

PERFORMANCE CURVES

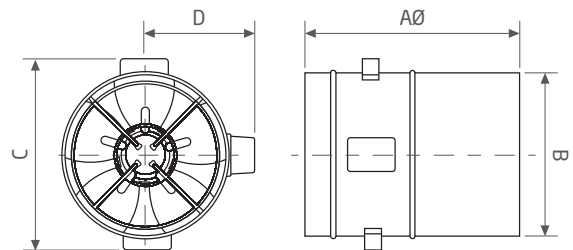


IN-LINE FANS WITH NON-RETURN AIR DAMPER



FEATURES

- **Motor structure:** Motor with external rotor inducted by a running capacitor
- **Insulation resistance:** Over 100 mega Ohm tested by a resistor at DC 500V
- **Dielectric with standing voltage:** AC 2, 500 V, at 0.5mA, 50Hz
- **Insulation isolation grade:** F
- **Protection grade:** IP55
- **Ball bearing:** 45°C 65,000 hours/ 60°C 35,000 hours
- **Single speed**



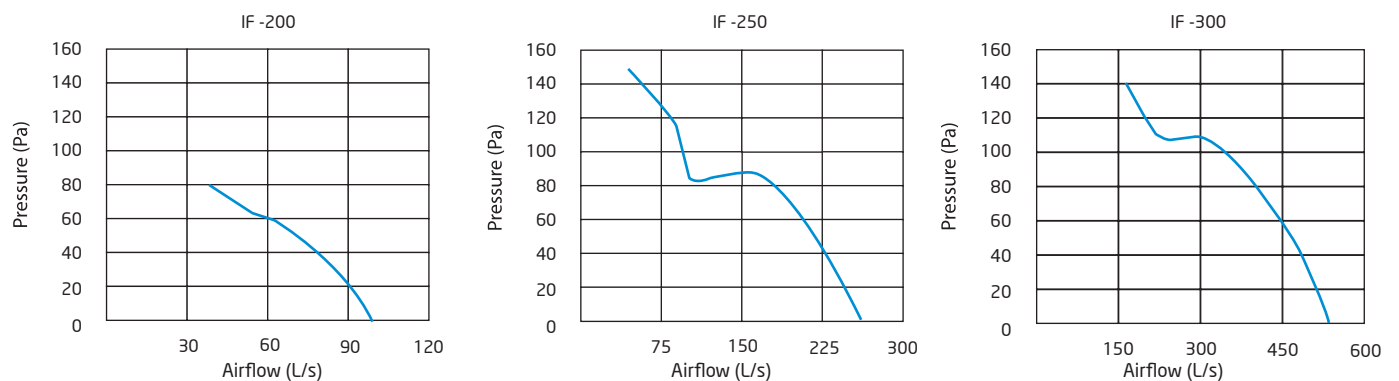
DIMENSIONS (mm)

Model	AØ	B	C	D	kg
IF-200	330	195	235	135	4.1
IF-250	370	245	275	150	4.4
IF-300	450	320	345	185	4.8

PERFORMANCE TABLE

Model	Fan Speed RPM	Sound Level dB(A)	Power (W)	Amps at 240V
IF-200	2450	59	0.062	0.23
IF-250	2500	68	0.115	0.51
IF-300	1350	65	0.095	0.44

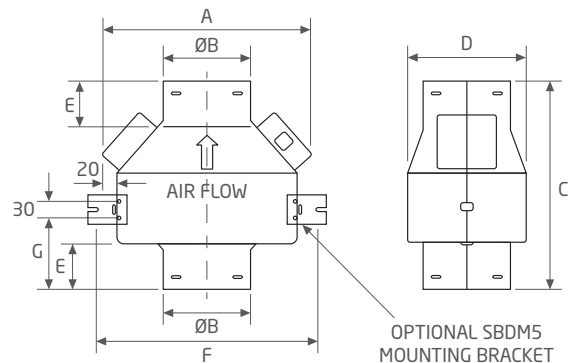
PERFORMANCE CURVES



SQUARE CENTRIFUGAL IN-LINE FANS

FEATURES

- Non-return dampers built in
- Mounting Brackets (optional)
- Can be mounted at different angles
- Low profile design enables installation confined spaces
- Suitable for a variety of domestic and commercial applications
- Single speed (CIF - 150), variable (CIF - 200)
- Space saving



DIMENSIONS (mm)

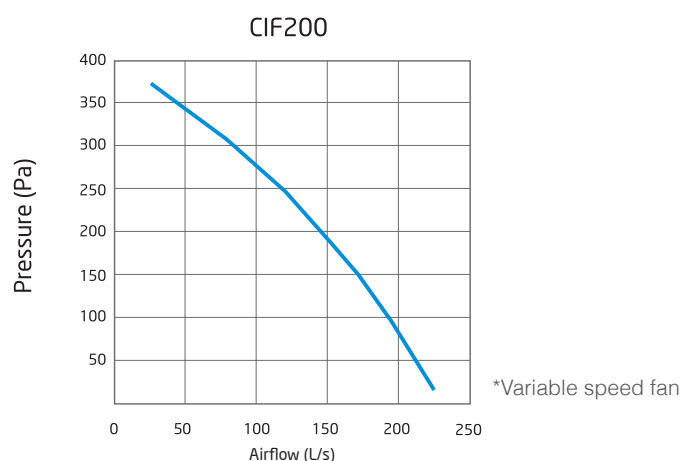
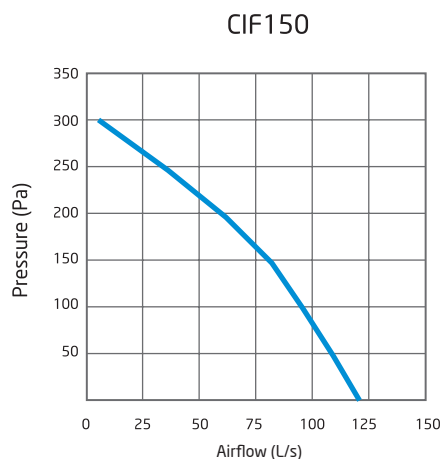
Model	A	ØB	C	D	E	F	G	Weight (Kg)
CIF-150	360	150	350	205	75	404	140	3
CIF-200	380	200	385	255	83	426	148	3.5

* Applicable only when Smooth Flow Damper is fitted

PERFORMANCE TABLE

Model	Max. Flow (L/s)	Sound Level dB (A)	Fan Speed (RPM)	Power (W)	Amps at 240V	SPL dB referred to 10–12 W Type D: ducted inlet/outlet (LW)							
						63	125	250	500	1K	2K	4K	8K
CIF-150	120	46	2520	62	0.27	59	65	59	62	62	63	56	43
CIF-200	222	50	2580	80	0.34	55	57	58	70	65	62	59	46

PERFORMANCE CURVE

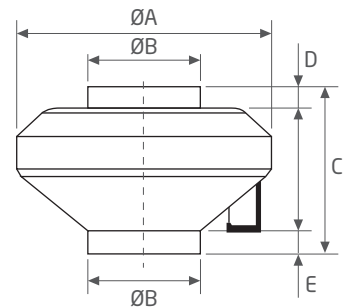


ROUND CENTRIFUGAL FANS



FEATURES

- Strong impact resistant plastic in-line range
- Flame resistant casing
- High performance
- Suitable for a variety of domestic and commercial applications
- IP44 Rated
- Single speed



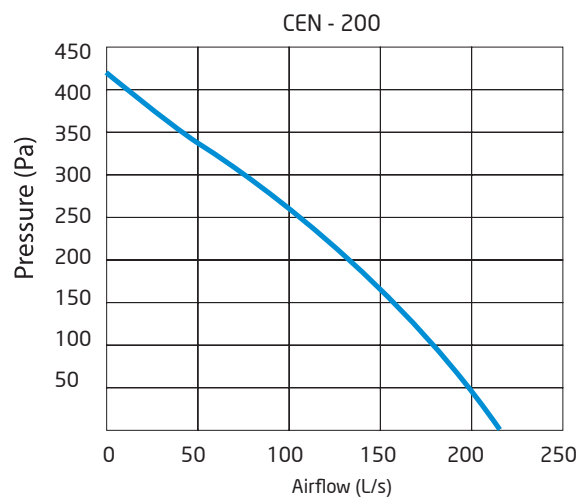
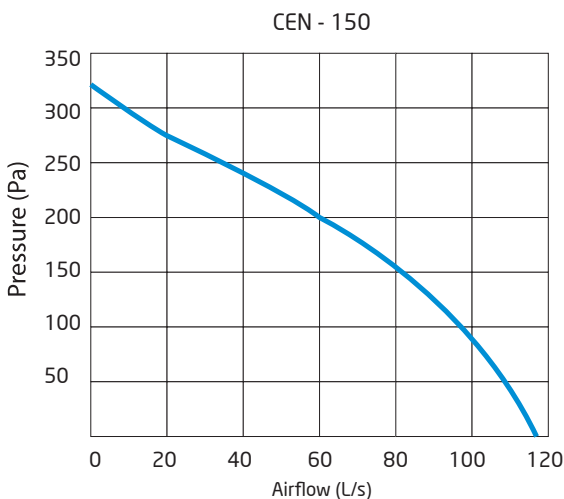
DIMENSIONS (mm)

Size	ØA	ØB	C	D	E	Weight (Kg)
CEN - 150	340	150	154	50	75	2.6
CEN - 200	340	200	154	50	75	3.0

PERFORMANCE TABLE

Model	Max. Flow (L/s)	Sound Level dB (A)	Fan Speed (RPM)	Motor Protection	Power (W)	Amps at 240V	Suits Duct Diameter (mm)	Voltage
CEN - 150	115	50	2350	IP44	80	0.35	150	240
CEN - 200	208	56	2520	IP44	110	0.45	200	240

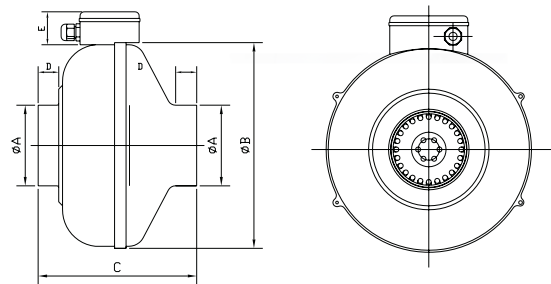
PERFORMANCE CURVE



CENTRIFUGAL DUCT FANS (Plastic)

FEATURES

- Automatic reset thermal overload protection
- NSK ball bearing, acceptable for continuous operation of 50,000h
- ABS casing (FR)
- Backward-curved centrifugal impeller using PA66 (FR)
- ABS (FR) connection box
- External rotor motor with low temperature rise
- Insulation Class F
- Enclosure class IP44



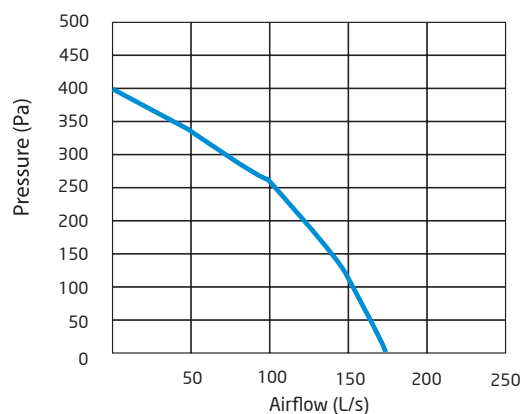
DIMENSIONS (mm)

Model	ØA	ØB	C	D	E	Weight (Kg)
HLP-150	150	350	218	30	40	4.2

PERFORMANCE TABLE

Model	Max. Flow (L/s)	Air pressure (PA)	Sound Level dB (A)	Fan Speed (RPM)	Power (W)	Amps at 240V	Max. Operating Temp (°C)	Suits Duct Diameter (mm)	Voltage
HLP-150	169.7	400	65	2210	50	0.44	60	150	220

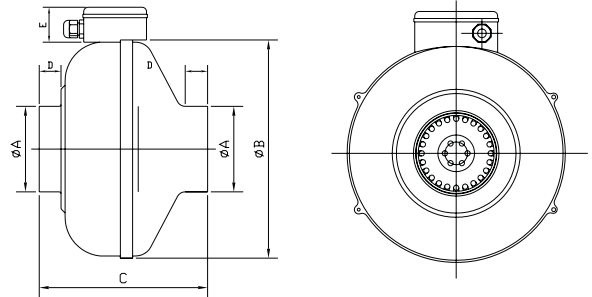
PERFORMANCE CURVES



CENTRIFUGAL DUCT FANS (Metal)

FEATURES

- Casing is made of high quality steel plate
- Backward-curved centrifugal impeller using PA66 (FR)
- ABS (FR) connection box
- External rotor motor with low temperature rise
- Automatic reset thermal overload protection
- NSK ball bearing, acceptable for continuous operation of 50,000h
- Operating temperature range: -20°C ~ 65°C
- Insulation Class F
- Enclosure class IP44



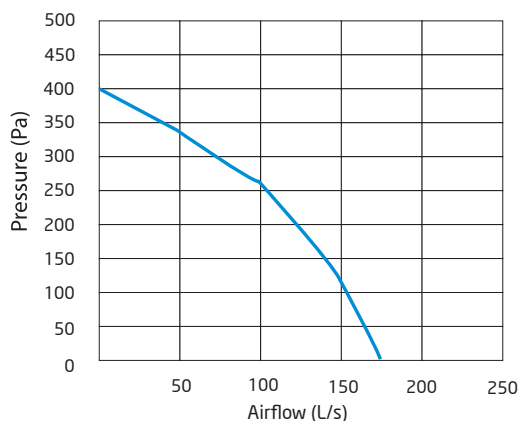
DIMENSIONS (mm)

Model	A	B	C	D	E	Weight (Kg)
HL-150	150	330	222	28	42	4.2

PERFORMANCE TABLE

Model	Max. Flow (L/s)	Air pressure (PA)	Sound Level dB (A)	Fan Speed (RPM)	Power (W)	Amps at 240V	Max. Operating Temp (°C)	Suits Duct Diameter (mm)	Voltage
HL-150	163.5	395	65	2460	100	0.45	50	150	220

PERFORMANCE CURVES

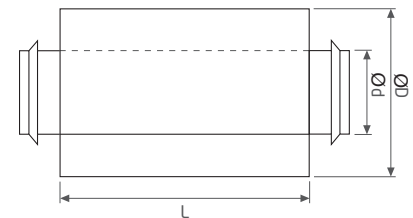


FAN ACCESSORIES

CIRCULAR SOUND ATTENUATORS

FEATURES

- Low cost, exceptional performance, ex-stock availability
- Sheet steel casing and end plates. 30 minute fire rating as standard
- Fitted spigot for direct connection to circular ductwork



DIMENSIONS (mm)

Size	Ød	ØD	L	kg
150	150	260	600	5.8
200	200	300	600	7
250	250	355	600	8.6
315	315	400	600	9.8

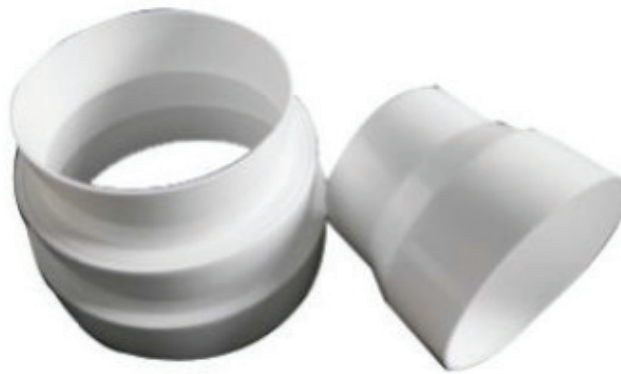
PERFORMANCE TABLE

Size	Attenuation dB mid frequency Hz							
	63	125	250	500	1K	2K	4K	8K
150	5	7	12	24	30	35	31	20
200	4	6	10	20	27	33	19	17
250	4	5	10	19	25	29	18	17
315	4	5	8	15	20	22	17	15

FAN ACCESSORIES



REMOTE RUN ON TIMER



DIAMETER REDUCERS
125-150mm/150-200mm



DUCT TECH PTY LTD

VIC Office

302–304 Boundary Road,
Dingley VIC 3172

Phone: (03) 8555 3003

Fax: (03) 8555 3081

Emails:

Sales:

sales@ducttech.com.au

General & Technical enquiries:

info@ducttech.com.au

Accounts:

accounts@ducttech.com.au

Delivery:

warehouse@ducttech.com.au

WWW.DUCTTECH.COM.AU

National Offices:

NSW & ACT Office

Phone: (02) 9674 1577

Fax: (02) 9674 1588

Email: salesnsw@ducttech.com.au

QLD Office

Phone: (07) 3890 8796

Fax: (07) 3890 8642

Email: salesqld@ducttech.com.au

SA & NT Office

Phone: (08) 8240 2888

Fax: (08) 8240 2777

Email: salessa@ducttech.com.au

TAS Office

Phone: 0418 756 643

Email: salestas@ducttech.com.au